

Revisions/Status	
R1	X
R2	
R3	
R4	
R5	

MC SPORTS
 3070 Spaffor SE, Grand Rapids, MI 49512
 (616) 942-2800 (616) 942-2312 Fax
 www.mcsparts.com

Total Space: 22,954 sq ft
 Sales: 19,659 sq ft - 82%
 Stock: 4,296 sq ft - 19%

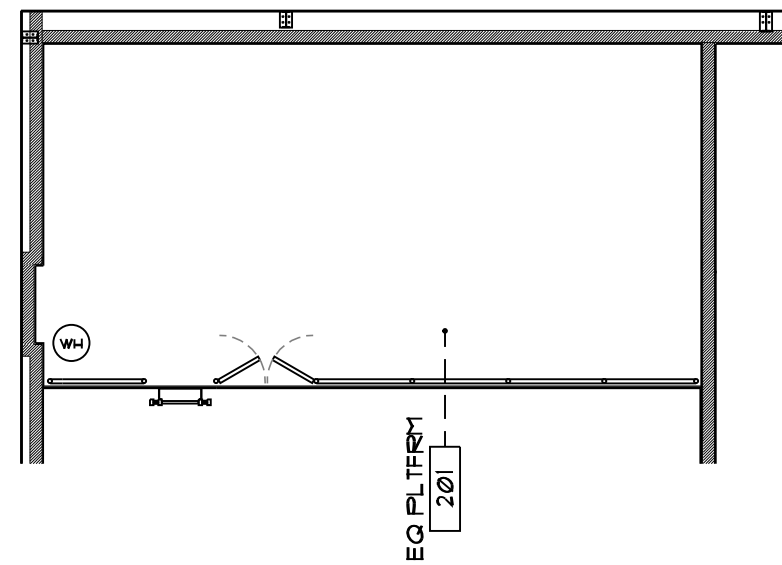
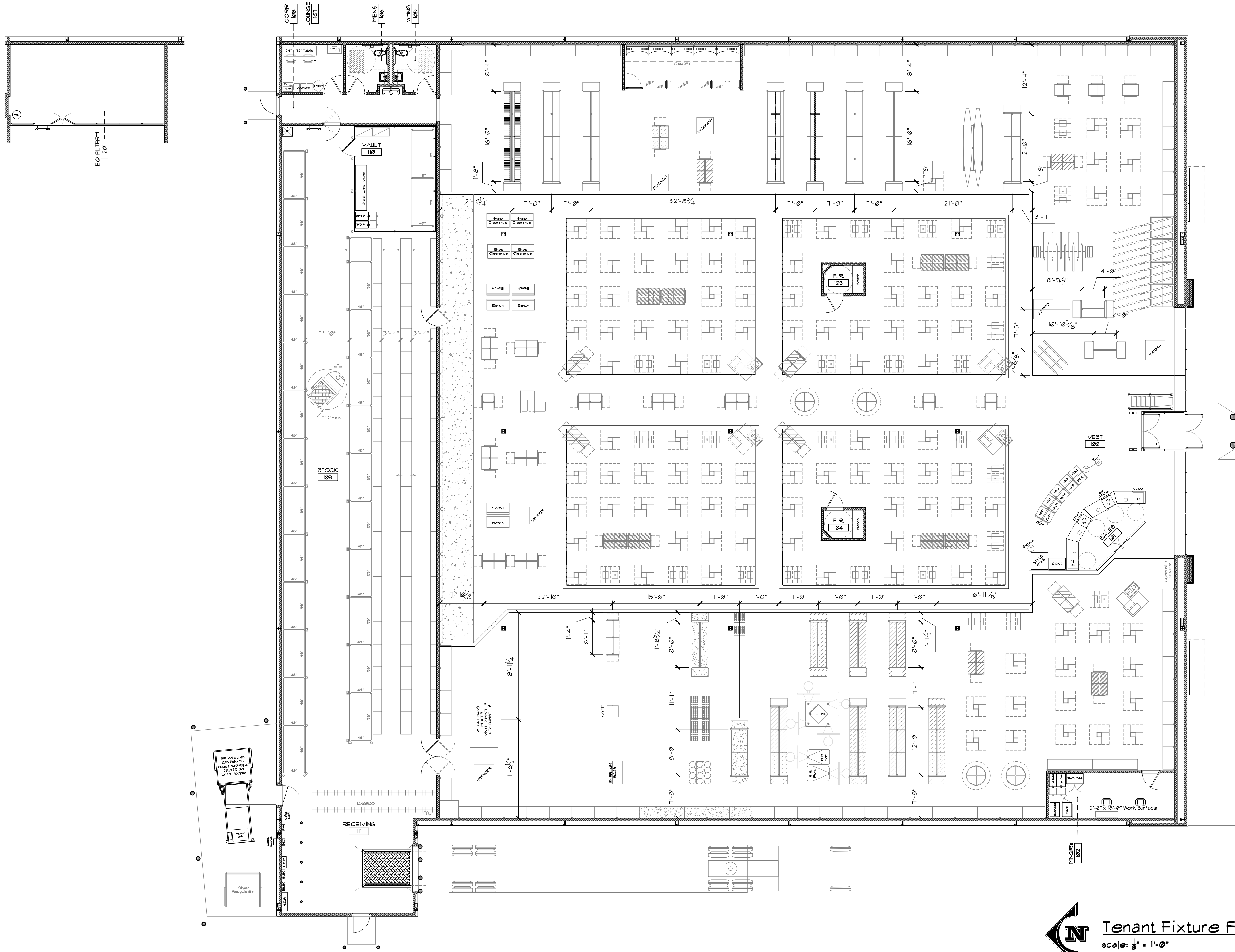
MC Sports
 Proposed:
 Mount Vernon, OH

Drawn By: JAM
 Date: 02-23-2015

TENANT LAYOUT
MC 1.1

Tenant Layout
 scale: 3/8" = 1'-0"

©2015 MC Sports, Grand Rapids, MI. All Rights Reserved. Mount Vernon, OH. This drawing is for informational purposes only and does not constitute a contract. No part of this drawing may be reproduced without the written permission of MC Sports.



Tenant Fixture Plan
 scale: 1/8" = 1'-0"

Revision	Status
X	
R1	X
R2	
R3	
R4	
R5	

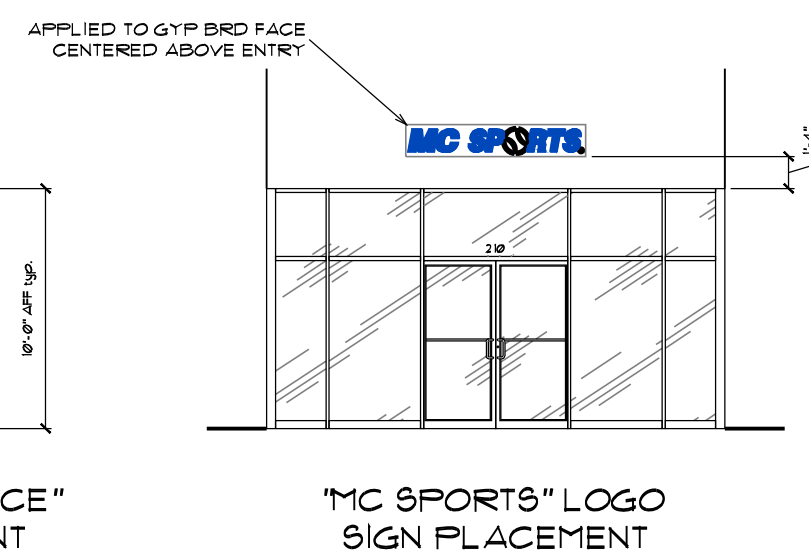
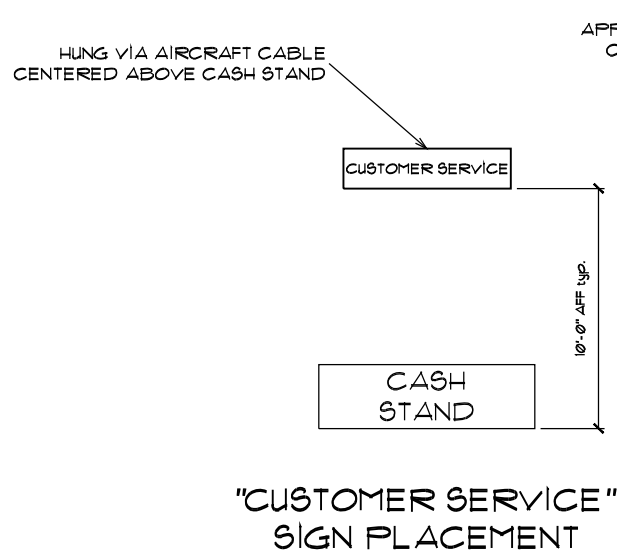
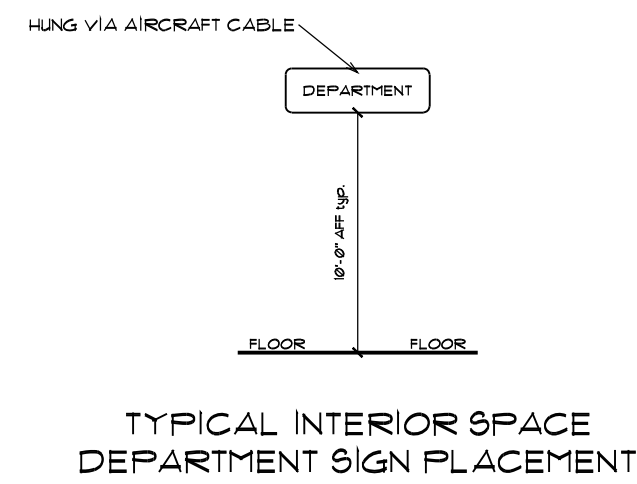
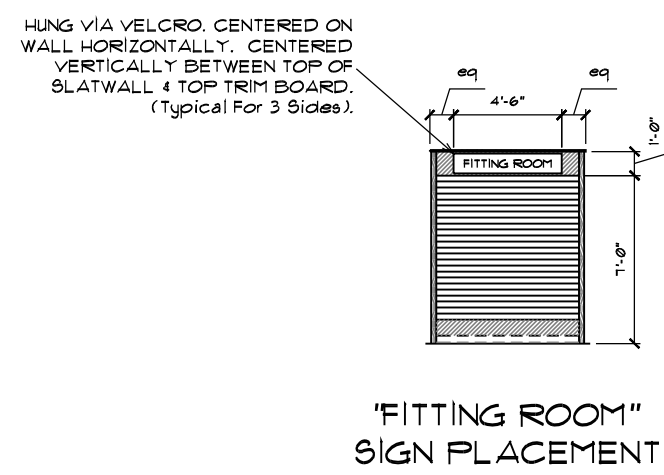
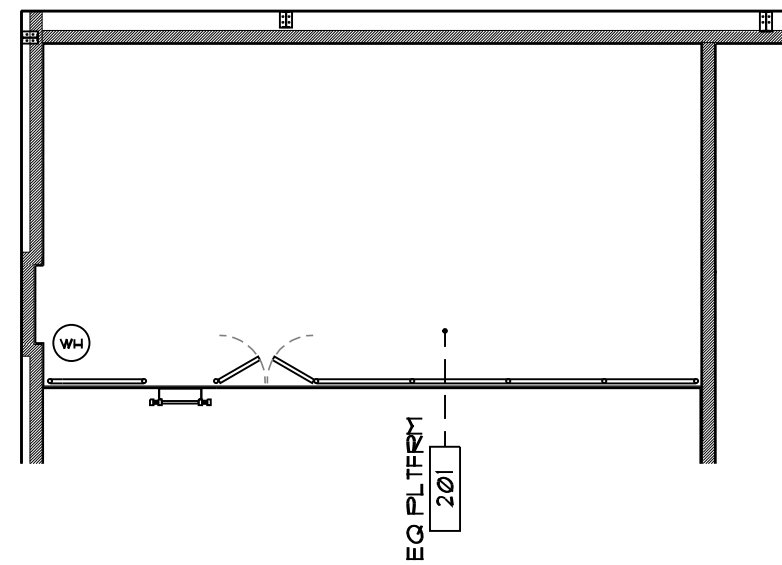
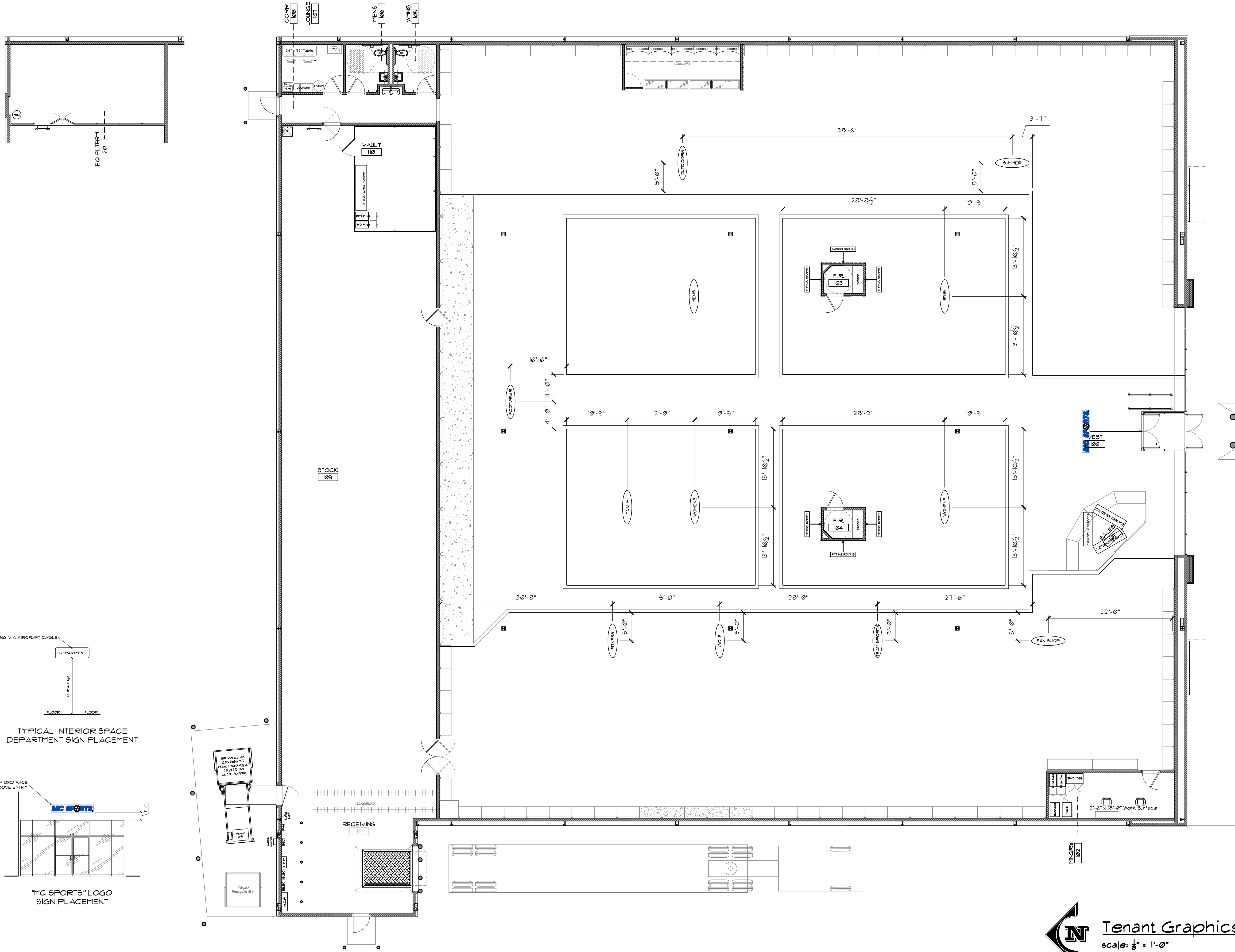
MC SPORTS
 3070 Shaffer SE, Grand Rapids, MI 49512
 (616) 942-2600 (616) 942-2312 Fax
 www.mcsporis.com

Total Space: 22,954 sq ft
 Sales: 18,658 sq ft - 81%
 Stock: 4,296 sq ft - 19%

MC Sports
 Proposed:
 Mount Vernon, OH

Drawn By: JAM
 Date: 03-23-2015

**TENANT
 FIXTURE
 PLAN**
**MC
 1.2**



Revision	Status
X	
R1	X
R2	
R3	
R4	
R5	

MC SPORTS
 3070 Shafter SE, Grand Rapids, MI 49512
 (616) 942-2600 (616) 942-2312 Fax
 www.mcsports.com

Total Space: 22,954 sq ft
 Sales: 18,655 sq ft - 81%
 Stock: 4,296 sq ft - 19%

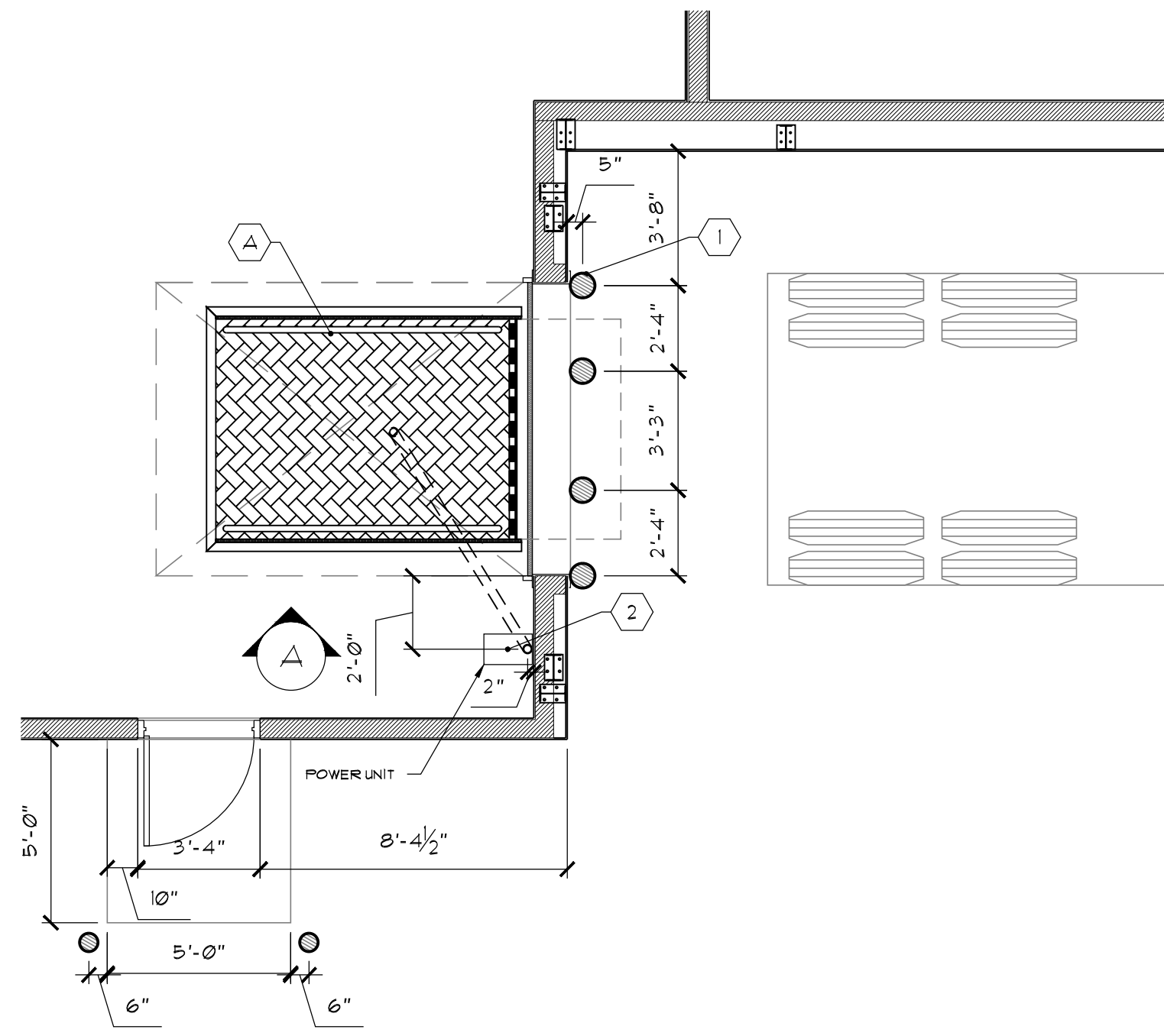
MC Sports
 Proposed:
 Mount Vernon, OH

Drawn By: JAM
 Date: 03-23-2015

TENANT GRAPHICS PLAN
MC 1.3

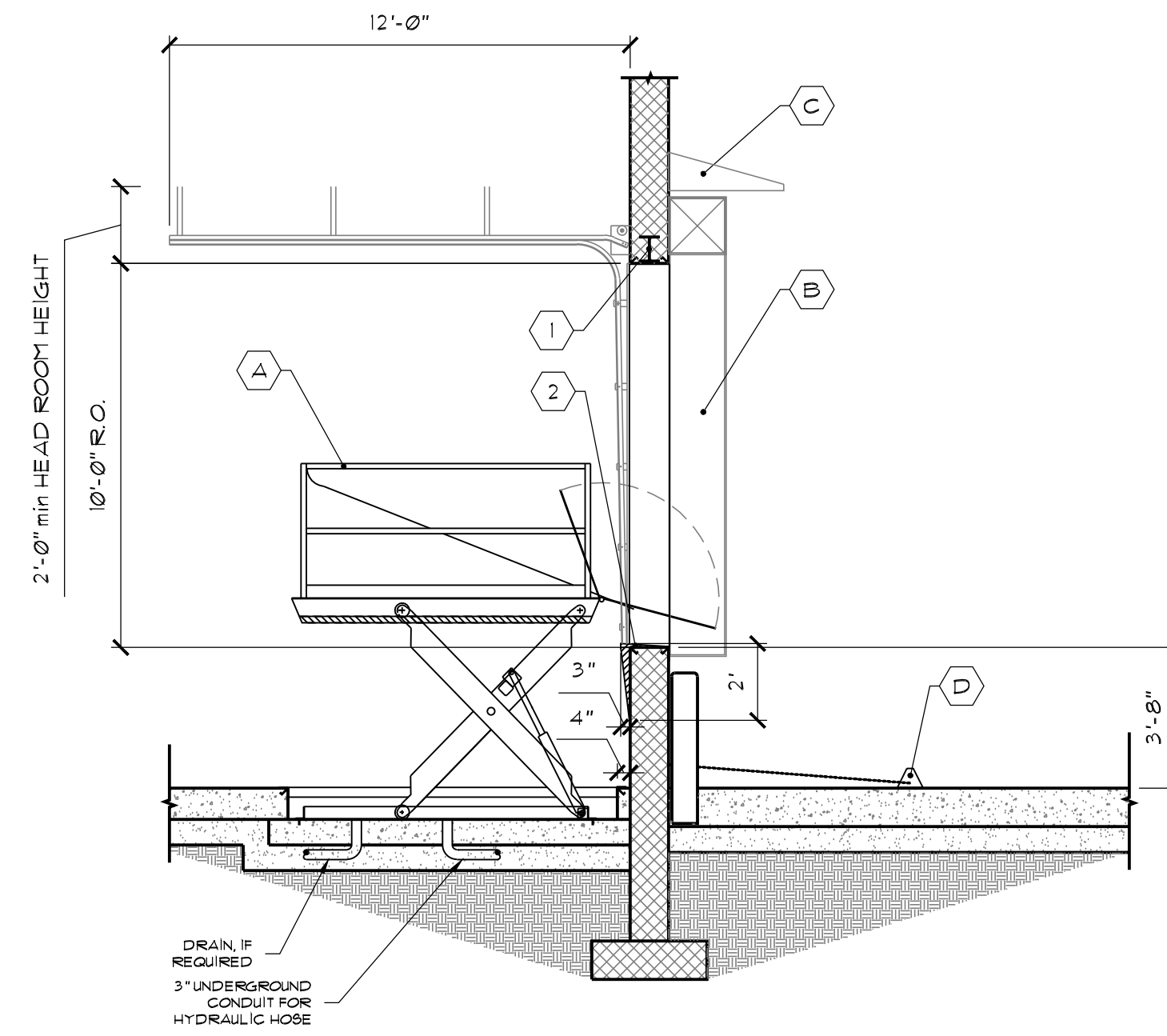
Tenant Graphics Plan
 scale: 3/8" = 1'-0"

©2015 Tenant Graphics, LLC. All rights reserved. Mount Vernon, OH. This document is the property of Tenant Graphics, LLC. No part of this document may be reproduced without written permission from Tenant Graphics, LLC.



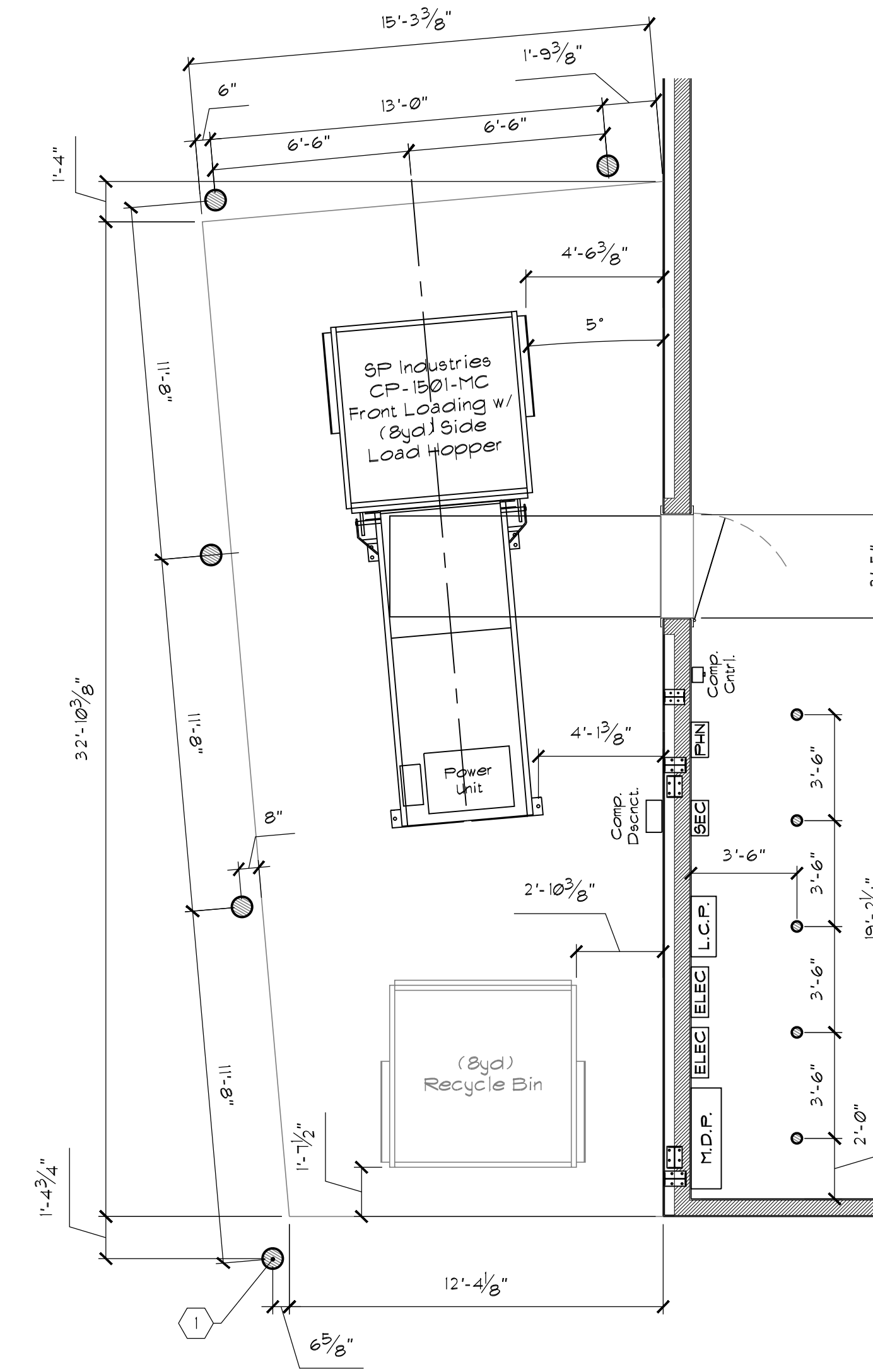
1 RECEIVING DETAIL
Scale: 1/4" = 1'-0"

- NOTES:
 1. PROVIDE (4) PROTECTIVE BOLLARDS. BOLLARDS TO BE CONCRETE-FILLED 8" x 36" AFF GALVANIZED STEEL PIPE, PAINT TRAFFIC YELLOW.
 2. PROVIDE A 3" UNDERGROUND CONDUIT FROM THE RECESSED PIT AREA TO THE POWER UNIT FOR THE HYDRAULIC HOSE.



A ELEV VIEW
Scale: 1/4" = 1'-0"

- NOTES:
 1. DOOR OPENING TO BE STRUCTURALLY SUPPORTED AS REQUIRED. ENSURE CONCRETE WALL IS STRUCTURALLY DESIGNED & PROTECTED TO WITHSTAND IMPACT OF TRACTOR/TRAILER.
 2. PROVIDE AN EXTENDED BILL PLATE FOR OVERHEAD DOOR. SLOPE TO EXTERIOR. BILL PLATE TO HAVE SITE-FABRICATED 24" TALL GUSSETS FITTED ON INT. SIDE AT EVERY 12" O.C. MIN TO PREVENT BRIDGE (OR INT. LINK) FROM CATCHING ON UNDERSIDE OF BILL PLATE DURING UP/DOWN OPERATION.
 3. WHEEL CHOCKS BY "RITE-HITE"; MADE OF LAMINATED RUBBER. PROVIDE CHAIN; CHOCKS TO BE SECURED VIA A MIN. 15'-0" CHAIN ATTACHED TO WALL.



2 COMPACTOR DETAIL
Scale: 1/4" = 1'-0"

- NOTES:
 1. PROVIDE (4) PROTECTIVE BOLLARDS. BOLLARDS TO BE CONCRETE-FILLED 8" x 36" AFF GALVANIZED STEEL PIPE; PAINT TRAFFIC YELLOW.

DOCK AREA HARDWARE			
KEY	DESCRIPTION	MANUFACTURER; PART #	REMARKS
A	DOCK LIFT	"ADVANCE LIFTS" #T-50608; G (blue)	Provide w/ 36" steel bridge on truck side; lift gates, separate control unit attached to backside of concrete bollard (provide a weather proof box), power unit, pre-wired power unit, complete installation package with optional hydraulic heater, recessed concrete slab (pit) under the dock per manuf specs. (Do not order lift with control unit attached to lift.)
B	DOCK SHELTER	"RITE-HITE/FROMMELT" SURVIVOR #450S	Black durathon fabric, 22oz armour pleats, tapered to conform to approach grade. Provide w/ "Rite-Hite" black shelter hood above top dock seal.
C	RAIN HOOD	"RITE-HITE" #MH525G	Metal hood placed above dock shelter; w/ gutters.
D	WHEEL CHOCKS	"RITE-HITE"	Laminated rubber. Provide chain; chocks to be secured via 15' chain attached to concrete bollards.

Revisions/Status	
X	
R1	X
R2	
R3	
R4	
R5	

MC SPORTS
 3070 Shaffer SE Grand Rapids, MI 49512
 (616) 942-2800 (616) 942-2312 Fax
 www.mcsports.com

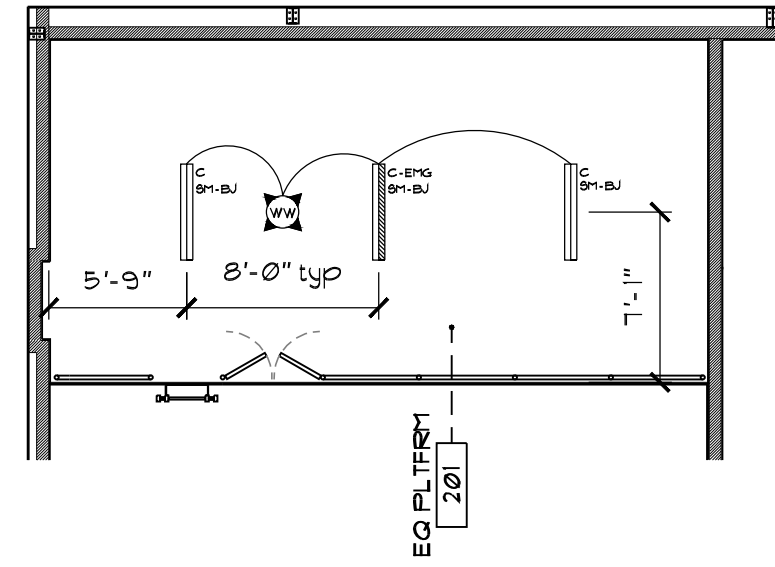
Total Space: 22,954 sq ft
 Sales: 18,658 sq ft - 82%
 Stock: 4,296 sq ft - 19%

MC Sports
 Proposed:
 Mount Vernon, OH

Drawn By: JAM
 Date: 05-23-2015

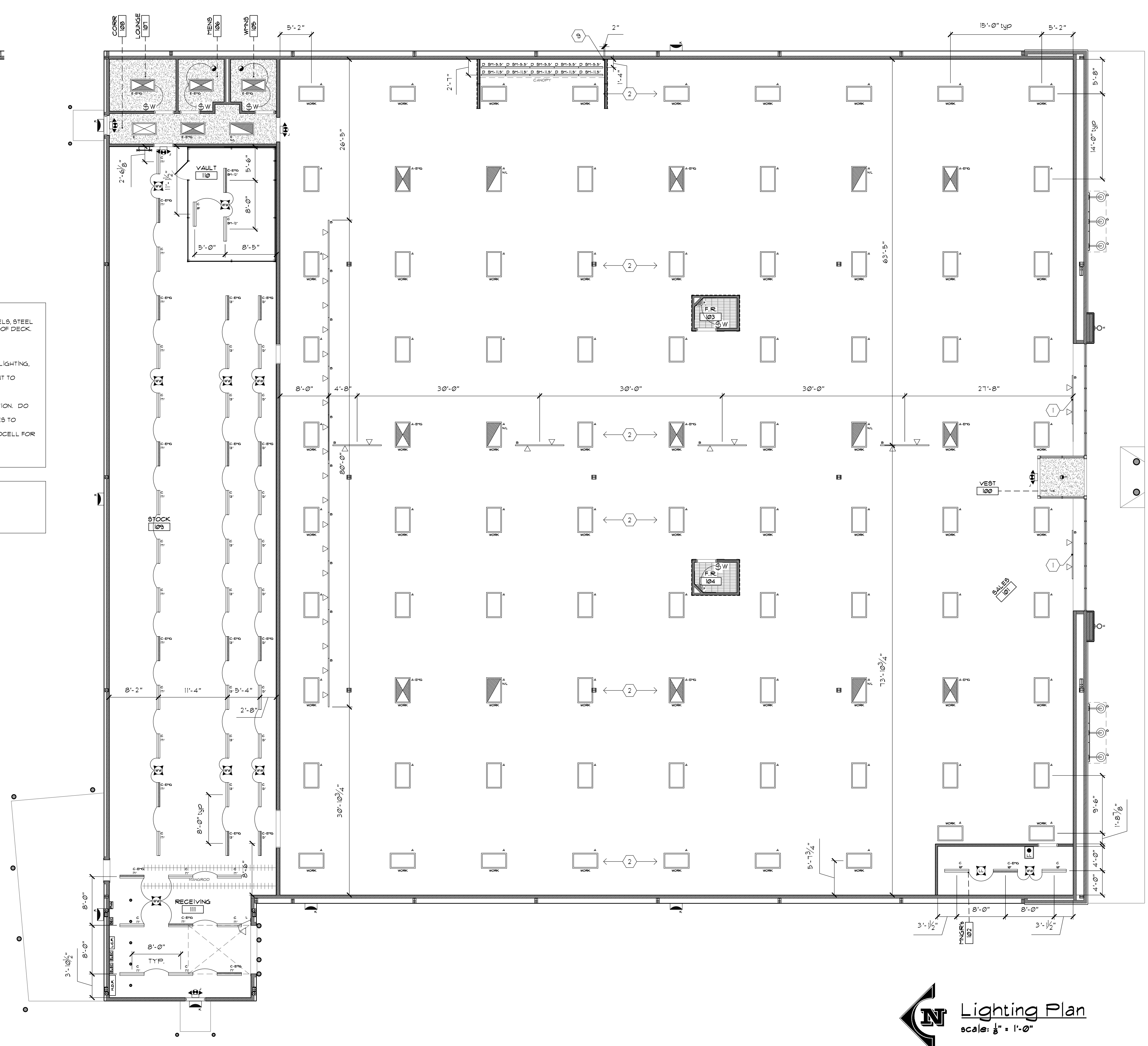
ELEVATIONS
 & DETAILS

MC
2.12



- GENERAL NOTES:**
- ALL LIGHTS TO BE HUNG FROM SUPPORTS CONNECTED TO THE MAIN STRUCTURAL FRAME. UNISTRUT, STEEL CHANNELS, STEEL ANGLES AND PURLINS MAY BE USED. DO NOT HANG OR OTHERWISE SUPPORT ANY ITEMS DIRECTLY FROM THE ROOF DECK. LIGHTS TO BE HUNG LEVEL WITH THE FLOOR AND IN AN ORDERLY FASHION.
 - UNLESS NOTED OTHERWISE, REMOVE ALL EXISTING LIGHT FIXTURES/APPLICATIONS IN ENTIRE SPACE.
 - ALL NEW FIXTURES, INCLUDING EXTERIOR, TO BE BY RUDJ LIGHTING.
 - REMOVE ANY EXISTING ENERGY MANAGEMENT SYSTEMS IN THEIR ENTIRETY.
 - PROVIDE TENANT SPECIFIED "LIGHTSTAT" LIGHTING CONTROL PANEL (ENERGY MANAGEMENT) FOR SALES FLOOR LIGHTING, EXTERIOR BUILDING SIGNAGE, GRAPHICS CASES, ETC. SEE SPECIFICATION.
 - MC SPORTS' PLAN FOR E.M. LIGHTING IS FOR REFERENCE ONLY. LANDLORD'S ELECTRICAL ENGINEER/CONSULTANT TO ENGINEER EMERGENCY LIGHTING PLAN TO MEET ALL CODES & REQUIREMENTS.
 - ENSURE NIGHT LIGHTS & EM LIGHTS ARE NOT CONTROLLED BY THE "LIGHTSTAT" ENERGY MANAGEMENT SYSTEM.
 - ALL EM LIGHTS & LED EXIT SIGN COMBOS TO BE MOUNTED ABOVE DOORWAYS OR ON COLUMNS.
 - ALL EMERGENCY LIGHTING DEVICES TO BE INCLUDED AS PART OF GENERAL LIGHTING - SEE EXHIBIT/SPECIFICATION. DO NOT MOUNT DEVICES TO PERIMETER SALES/STOCK WALLS. DO NOT USE WALL PACKS OR SIMILAR DEVICES.
 - ALL AUDIBLE & VISUAL LIFE SAFETY DEVICES TO BE MOUNTED TO CEILING OR COLUMNS. DO NOT MOUNT DEVICES TO PERIMETER SALES/STOCK WALLS.
 - L.L. TO PROVIDE EXTERIOR WALL PACK SECURITY LIGHTS. SECURITY LIGHTS SHALL BE CONTROLLED BY PHOTOCELL FOR 24-HOUR OPERATION.
 - AIM ALL SPOTLIGHTS AFTER INSTALLATION OF FIXTURES.
 - INSULATION AT ROOF DECK TO BE WHITE AND FREE OF ANY "SAGGING".

- KEYED NOTES:**
- WALL MOUNT ACCENT LIGHTS ABOVE WINDOW WALL @ APPX 12'-0" AFF.
 - THIS ROW OF NEW GENERAL SALES FLOOR LIGHT FIXTURES TO BE "WORK LIGHTS" ON TENANTS LIGHTSTAT LIGHTING CONTROL PANEL.



Lighting Plan
 scale: 1/8" = 1'-0"

Revisions/Status	
X	
R1	
R2	
R3	
R4	
R5	

MC SPORTS
 3070 Shaffer SE, Grand Rapids, MI 49512
 (616) 942-2600 / (616) 942-1312 Fax
 www.mcSPORTS.com

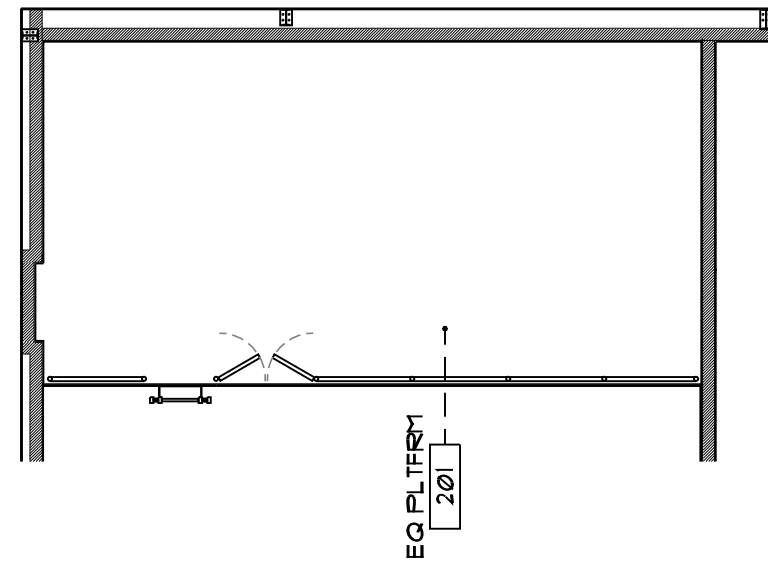
Total Space: 22,954 sq ft
 Sales: 18,659 sq ft - 82%
 Stock: 966 sq ft - 4.2%
 4,329 sq ft - 19%

MC Sports
 Proposed:
 Mount Vernon, OH

Drawn By: JAM
 Date: 05-23-2018

Lighting Plan
MC 2.13

©2018 Rudj Lighting, Grand Rapids, MI. All Rights Reserved. Mount Vernon, OH. This document is the property of Rudj Lighting and is not to be distributed, copied, or reproduced without the written permission of Rudj Lighting.



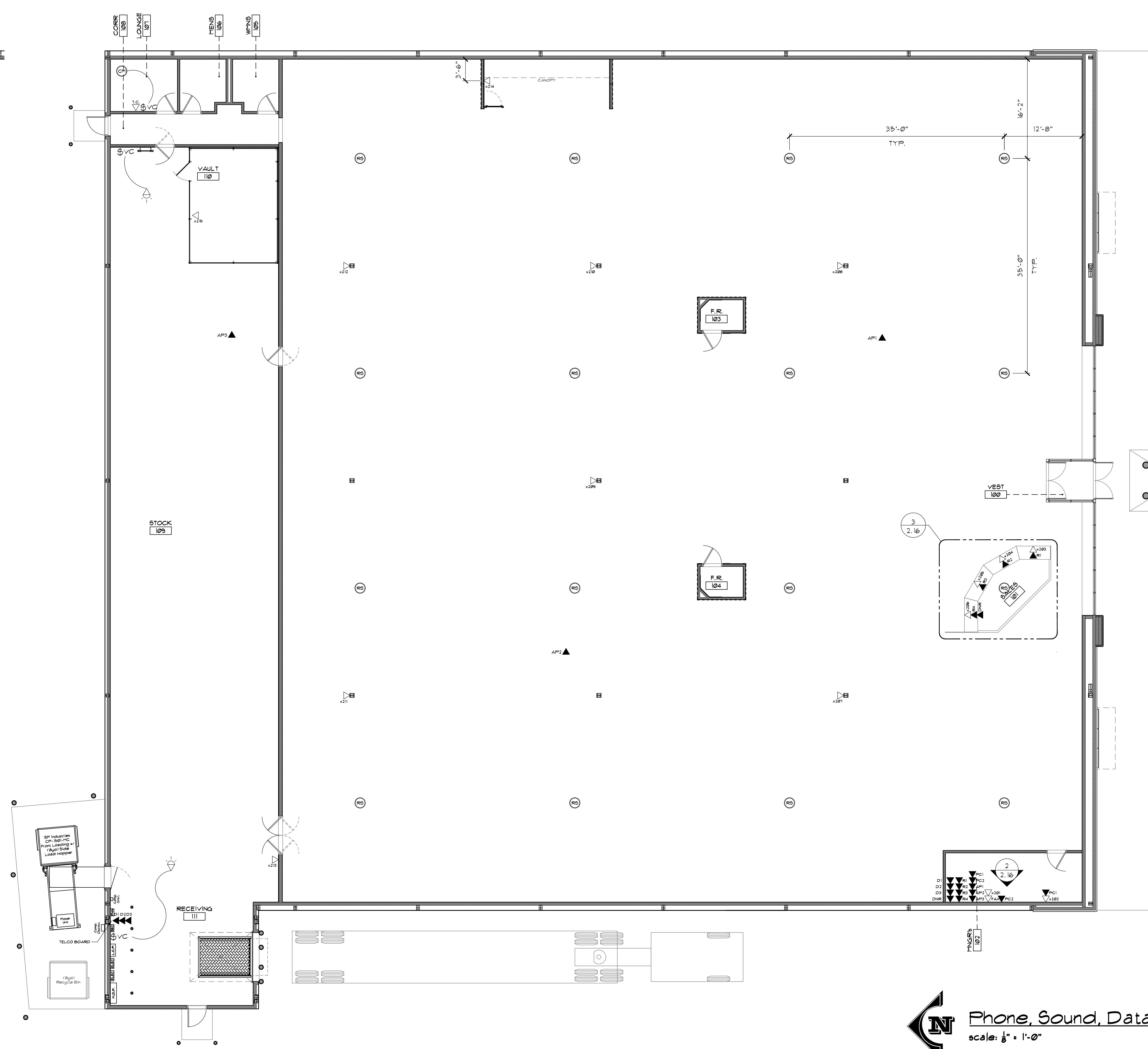
- GENERAL NOTES:**
- ENSURE EXTERIOR PHONE/DATA LINES ARE SECURED AGAINST VANDALISM & TAMPERING. DO NOT LEAVE EXPOSED PHONE/DATA LINES ON THE EXTERIOR OF THE BUILDING. ENCASE ALL LOW VOLTAGE LINES IN CONDUIT. PROVIDE CONDUIT & 25 PAIR CABLE FOR TELEPHONE LINES INTO TENANT DEMARCATION POINT, LOW VOLTAGE BACKBOARD.
 - E.C. TO PROVIDE & INSTALL BUSHED CONDUIT FROM THE ROOF JOIST STEEL TO THE (low voltage systems) TERMINATION POINT. PROVIDE GALVANIZED ZINC HANDY BOXES, CONDUIT, EMT, CABLE CONNECTORS, etc FOR LOW VOLTAGE WIRING. ALL CONDUIT SHALL BE INSTALLED PARALLEL & SQUARE TO BUILDING STRUCTURAL STEEL & THEN RAN DOWN THROUGH WITHIN WALLS, DOOR FRAMES, etc. INSTALL FULL CABLES WITHIN ALL CONDUIT. LOW VOLTAGE WIRING, TERMINATIONS, & FACE PLATES BY TENANTS' LOW VOLTAGE CONTRACTORS.
 - PAINT ALL CONDUIT, HANDY BOXES, CONNECTORS, etc TO MATCH ADJACENT BACKDROP. UNPAINTED CONDUIT, etc IS ALLOWED IN THE STOCKROOM & RECEIVING AREA ONLY.
 - ALL PHONE JACK LOCATIONS ARE @ 48" AFF UNLESS NOTED/DETAILED OTHERWISE.
 - ALL AUDIBLE & VISUAL LIFE SAFETY DEVICES TO BE MOUNTED ON CEILING OR ON COLUMNS AT 12'-3" min AFF.
 - HIGHEST POINT IN THE BUILDING IS APPROX. 19'-0" AT THE FRONT OF THE STORE AND APPROX. 16'-0" AT THE REAR OF THE STORE.

Cable		Direction	Jack Color	Phone	Ext Label	Side Note
x201	SHARED DUAL GANG UTILITY BOX MOUNTED @ 18" AFF. (1) CAT6 CABLE TO COM BACKBOARD.		BLUE	YES	MNGRS 1	UNRESTRICTED EXTENSION. (1) HANDSET REQUIRED. DESK MOUNT.
x202	SHARED SINGLE GANG UTILITY BOX MOUNTED @ 18" AFF. (1) CAT6 CABLE TO COM BACKBOARD.		BLUE	YES	MNGRS 2	UNRESTRICTED EXTENSION. (1) HANDSET REQUIRED. DESK MOUNT.
x203	SHARED SINGLE GANG UTILITY BOX MOUNTED WITHIN CASHWRAP @ 10" AFF. (1) CAT6 CABLE TO COM BACKBOARD.		BLUE	YES	REG 1	UNRESTRICTED EXTENSION. (1) HANDSET REQUIRED. DESK MOUNT.
x204	SHARED SINGLE GANG UTILITY BOX MOUNTED WITHIN CASHWRAP @ 10" AFF. (1) CAT6 CABLE TO COM BACKBOARD.		BLUE	NO	REG 2	UNRESTRICTED EXTENSION. (0) HANDSET REQUIRED. DESK MOUNT.
x205	SHARED SINGLE GANG UTILITY BOX MOUNTED WITHIN CASHWRAP @ 10" AFF. (1) CAT6 CABLE TO COM BACKBOARD.		BLUE	YES	REG 3	UNRESTRICTED EXTENSION. (1) HANDSET REQUIRED. DESK MOUNT.
x206	SHARED SINGLE GANG UTILITY BOX MOUNTED WITHIN CASHWRAP @ 10" AFF. (1) CAT6 CABLE TO COM BACKBOARD.		BLUE	NO	REG 4	UNRESTRICTED EXTENSION. (0) HANDSET REQUIRED. DESK MOUNT.
x207	SINGLE GANG UTILITY BOX MOUNTED @ 48" AFF. (1) CAT6 CABLE TO COM BACKBOARD.		BLUE	YES	TEAM SPORTS	RESTRICTED EXTENSION. (1) PHONE REQUIRED.
x208	SINGLE GANG UTILITY BOX MOUNTED @ 48" AFF. (1) CAT6 CABLE TO COM BACKBOARD.		BLUE	YES	MENS	RESTRICTED EXTENSION. (1) PHONE REQUIRED.
x209	SINGLE GANG UTILITY BOX MOUNTED @ 48" AFF. (1) CAT6 CABLE TO COM BACKBOARD.		BLUE	YES	WOMENS	RESTRICTED EXTENSION. (1) PHONE REQUIRED.
x210	SINGLE GANG UTILITY BOX MOUNTED @ 48" AFF. (1) CAT6 CABLE TO COM BACKBOARD.		BLUE	YES	OUTDOORS	RESTRICTED EXTENSION. (1) PHONE REQUIRED.
x211	SINGLE GANG UTILITY BOX MOUNTED @ 48" AFF. (1) CAT6 CABLE TO COM BACKBOARD.		BLUE	YES	FITNESS	RESTRICTED EXTENSION. (1) PHONE REQUIRED.
x212	SINGLE GANG UTILITY BOX MOUNTED @ 48" AFF. (1) CAT6 CABLE TO COM BACKBOARD.		BLUE	YES	FOOTWEAR	RESTRICTED EXTENSION. (1) PHONE REQUIRED.
x213	SINGLE GANG UTILITY BOX MOUNTED @ 48" AFF. (1) CAT6 CABLE TO COM BACKBOARD.		BLUE	YES	RECEIVING	RESTRICTED EXTENSION. (1) PHONE REQUIRED.
x214	SINGLE GANG UTILITY BOX MOUNTED @ 48" AFF. (1) CAT6 CABLE TO COM BACKBOARD.		BLUE	YES	GUN SALES	RESTRICTED EXTENSION. (1) PHONE REQUIRED.
x215	SINGLE GANG UTILITY BOX MOUNTED @ 18" AFF. (1) CAT6 CABLE TO COM BACKBOARD.		BLUE	YES	GUN VAULT	UNRESTRICTED EXTENSION. (1) PHONE REQUIRED. DESK MOUNT.
FAX	SHARED DUAL GANG UTILITY BOX MOUNTED @ 18" AFF. (1) CAT6 CABLE TO COM BACKBOARD.		BLUE		FAX	USE FAX LINE.
T.C.	SINGLE GANG UTILITY BOX MOUNTED @ 48" AFF. (1) CAT6 CABLE TO COM BACKBOARD.		BLUE		TIME CENTER	USE FAX LINE.
D1	SHARED DUAL GANG UTILITY BOX MOUNTED @ 4'-0" AFF IN MNGRS & ON COM BACKBOARD. (1) CAT6 CABLE BETWEEN EACH TERMINATION.		RED		DATA 1	
D2	SHARED DUAL GANG UTILITY BOX MOUNTED @ 4'-0" AFF IN MNGRS & ON COM BACKBOARD. (1) CAT6 CABLE BETWEEN EACH TERMINATION.		RED		DATA 2	
D3	SHARED DUAL GANG UTILITY BOX MOUNTED @ 4'-0" AFF IN MNGRS & ON COM BACKBOARD. (1) CAT6 CABLE BETWEEN EACH TERMINATION.		RED		DATA 3	
DNR	SHARED DUAL GANG UTILITY BOX MOUNTED @ 10" AFF WITHIN CASHWRAP & 4'-0" AFF IN MNGRS. (1) CAT6 CABLE BETWEEN EACH TERMINATION.		ORANGE		DNR	
R1	SHARED DUAL GANG UTILITY BOX MOUNTED @ 10" AFF WITHIN CASHWRAP & 4'-0" AFF IN MNGRS. (1) CAT6 CABLE BETWEEN EACH TERMINATION.		ORANGE		REG 1	
R2	SHARED DUAL GANG UTILITY BOX MOUNTED @ 10" AFF WITHIN CASHWRAP & 4'-0" AFF IN MNGRS. (1) CAT6 CABLE BETWEEN EACH TERMINATION.		ORANGE		REG 2	
R3	SHARED DUAL GANG UTILITY BOX MOUNTED @ 10" AFF WITHIN CASHWRAP & 4'-0" AFF IN MNGRS. (1) CAT6 CABLE BETWEEN EACH TERMINATION.		ORANGE		REG 3	
R4	SHARED DUAL GANG UTILITY BOX MOUNTED @ 10" AFF WITHIN CASHWRAP & 4'-0" AFF IN MNGRS. (1) CAT6 CABLE BETWEEN EACH TERMINATION.		ORANGE		REG 4	
AP1	SHARED DUAL GANG UTILITY BOX MOUNTED @ 4'-0" AFF IN MNGRS & AT SALESFLOOR LOCATION. (1) CAT6 CABLE BETWEEN EACH TERMINATION. LEAVE 10'-0" OF COILED CABLE @ SALESFLOOR DECK.		GREEN		AP 1	
AP2	SHARED DUAL GANG UTILITY BOX MOUNTED @ 4'-0" AFF IN MNGRS & AT SALESFLOOR LOCATION. (1) CAT6 CABLE BETWEEN EACH TERMINATION. LEAVE 10'-0" OF COILED CABLE @ SALESFLOOR DECK.		GREEN		AP 2	
AP3	SHARED DUAL GANG UTILITY BOX MOUNTED @ 4'-0" AFF IN MNGRS & AT SALESFLOOR LOCATION. (1) CAT6 CABLE BETWEEN EACH TERMINATION. LEAVE 10'-0" OF COILED CABLE @ SALESFLOOR DECK.		GREEN		AP 3	
PC1	SHARED DUAL GANG UTILITY BOX MOUNTED @ 18" AFF IN MNGRS & AT 4'-0" AFF IN MNGRS. (1) CAT6 CABLE BETWEEN EACH TERMINATION.		YELLOW		PC1	
PC2	SHARED DUAL GANG UTILITY BOX MOUNTED @ 18" AFF IN MNGRS & AT 4'-0" AFF IN MNGRS. (1) CAT6 CABLE BETWEEN EACH TERMINATION.		YELLOW		PC2	

* ALL VOICE & FAX APPLICATIONS MAY SPLIT PAIRS WHERE APPLICABLE

Line	Identity	Use
1	T.B.D.	Primary Voice
2	T.B.D.	Rollover Voice
3	T.B.D.	Rollover Voice
4	T.B.D.	Fax, Timecenter, Backup Security
5	T.B.D.	Primary Security

* ALL LINES MUST BE CLEARLY IDENTIFIED, INCLUDING IDENTITY & USE, ON THE PHONE BLOCK.



Phone, Sound, Data Plan
 scale: 1/8" = 1'-0"

Revisions/Status	
X	
1	
2	
3	
4	
5	

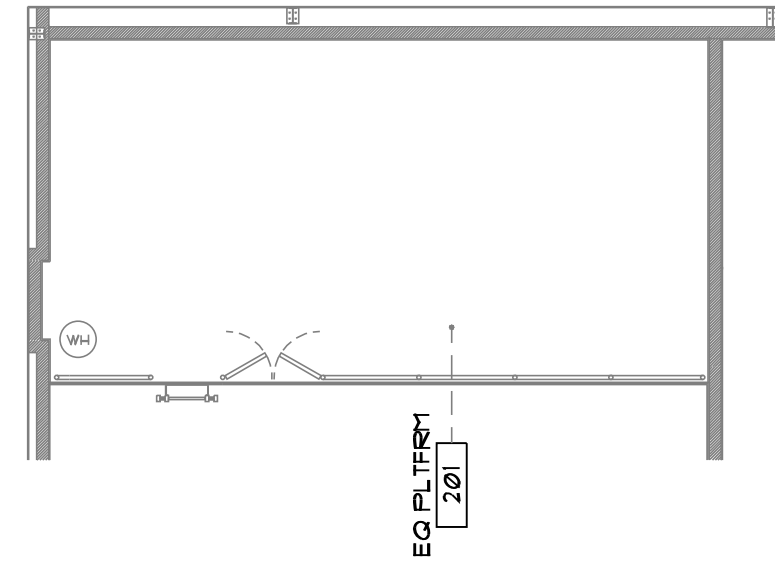
MC SPORTS
 3070 Shaffer Rd, Grand Rapids, MI 49512
 (616) 942-2600 / (616) 942-2312 Fax
 www.mcsports.com

Total Space: 22,954 sq ft
 Sales: 19,659 sq ft - 82%
 Stock: 4,136 sq ft - 18%

MC Sports
 Proposed:
 Mount Vernon, OH

Drawn By: JAM
 Date: 02-23-2018

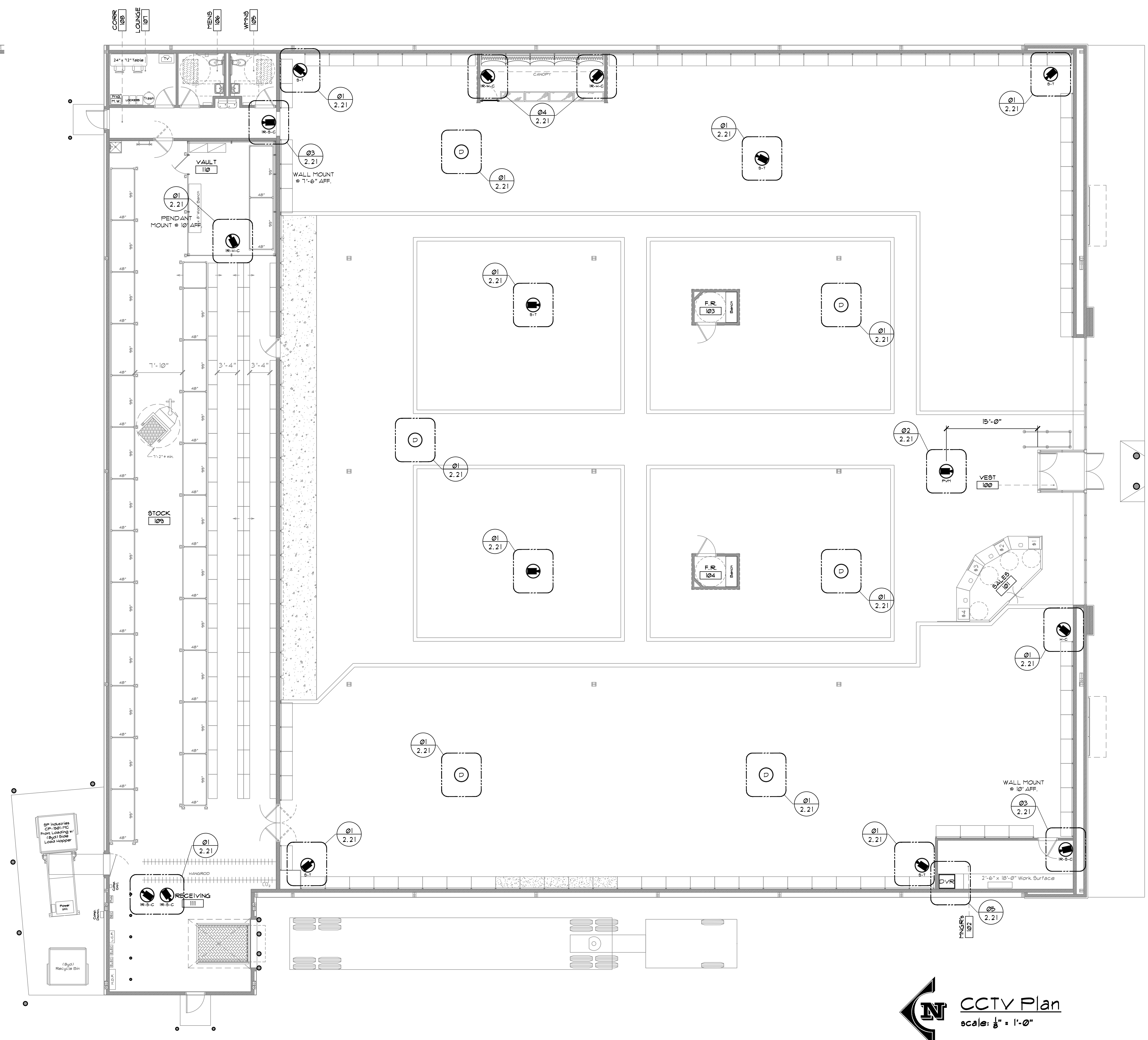
PHONE, SOUND, DATA PLAN
MC 2.15



- BY OTHERS: G.C., ELECTRICIAN, PAINTER**
- INSTALLATION MUST BE COMPLETED THREE WEEKS PRIOR TO TURNOVER. CCTV VENDOR SHALL NOT INCLUDE THE FOLLOWING:
 - PENDANTS FOR ALL CAMERAS, INCLUDING DRONES (EXCEPT FRONT ENTRANCE MONITOR MOUNT).
 - CONDUIT AND GANG BOX FOR ALL WALL MOUNT LOCATIONS.
 - MATERIAL NEEDED:
 - BUSHED 1/2" DIAMETER GALVANIZED ZINC CONDUIT AND SINGLE GANG BOXES
 - 3" DIAMETER PVC OR METAL CONDUIT
 - UNISTRUT WITH BEAM CLAMP MOUNTS
 - PULL CABLE
 - PAINT TO MATCH "P1"
 - CONDUIT, GANG BOX, WHITE RECEPTACLE W/PLATE, WIRE FOR 120V - 20AMP POWER
 - ALL CONDUIT SHALL BE INSTALLED PARALLEL AND SQUARE TO BUILDING STRUCTURAL STEEL.
 - INSTALL PAINTED BEAM CLAMPS ON BOTTOM CORD OF ROOF JOISTS FOR HANGING CONDUIT PENDANTS.
 - INSTALL PAINTED UNISTRUT AT BOTTOM CORD OF ROOF JOISTS IF CAMERA LOCATION FALLS BETWEEN ROOF JOISTS FOR PENDANT LOCATIONS.
 - INSTALL BUSHED CONDUIT AT BUILDING STEEL WITH GANG BOX (FOR CAMERA) FROM ROOF JOIST TO 14'-6" OFF THE FINISHED FLOOR FOR PENDANT SALES FLOOR CAMERA AND DRONE LOCATIONS. PAINT EXPOSED CONDUIT AND GANG BOX.
 - INSTALL CONDUIT AND WITH GANG BOX FOR ALL WALL MOUNT CAMERA LOCATIONS BEHIND DRY WALL, INSIDE WALL CAVITY FROM ROOF JOISTS TO HEIGHT ABOVE FINISHED FLOOR AS INDICATED ON MC SPORTS DRAWINGS.
 - INSTALL EXPOSED CONDUIT WITH GANG BOX FOR ALL CAMERA LOCATIONS WITHIN THE BACKROOM ON UNFINISHED WALLS FROM THE ROOF JOISTS TO HEIGHT ABOVE FINISHED FLOOR AS INDICATED ON MC SPORTS DRAWINGS.
 - INSTALL 3" DIAMETER PAINTED CONDUIT IN MANAGERS OFFICE FROM ROOF JOIST TO 6'-6" AFF AT TOP CORNER SHELF IN MANAGERS OFFICE.
 - PROVIDE STANDARD POWER AT ROOF JOIST FOR FRONT ENTRANCE MONITOR/CAMERA.
 - PROVIDE STANDARD POWER FOR CCTV SYSTEM IN MANAGERS OFFICE UNDER DESK.

CCTV System Schedule	
Symbol	System To Consist Of:
DVR	HDDP DVR 16 Channel Embedded Digital Video Recorder. All located in Mng'r's Office. System to include: Backup UPS with Surge Suppression. Power Converter: DC CCTV power supply designed to power CCTV Cameras and Accessories. 32" Desktop Full High Definition LCD Monitor. Cabling - BNC Siamess Cable; Reguair: White; Integrated Video/Power Recordable Media: 12 Devices such as DVD Disks, Memory Sticks, etc.
Public View Monitor	Public View Monitor with Integrated Wide Dynamic Range Camera; 26" LCD Flat Screen. To Include: Monitor Mount and Telescoping Pole. Direct Mount to Bottom Cord of Roof Joist. Pre-Cabled with Video and Power.
IR-S-C	Camera - IR Standard Resolution, Clear Dome.
S-C	Camera - Standard Resolution, Clear Dome.
S-T	Camera - Standard Resolution, Tinted Dome.
IR-H-C	Camera - IR High Resolution, Clear Dome.
H-C	Camera - High Resolution, Clear Dome.
H-T	Camera - High Resolution, Tinted Dome.
D	Drone/Dummy Tinted Dome.

- GENERAL NOTES:**
- TENANT TO FURNISH/INSTALL A COMPLETE CCTV SYSTEM.
 - SEE TENANT CCTV REQUIREMENTS & SPECIFICATIONS FOR ADDITIONAL INFORMATION REGARDING EXACT EQUIPMENT SPECIFICATIONS, PROGRAMMING, TRAINING, WARRANTY, etc.
 - THE STORE IS OPEN TO ROOF DECK (no ceiling). BOTTOM OF BAR JOIST IS @ 11'-0" AFF.
 - THE CCTV SYSTEM MUST OPERATE 100% PRIOR TO MERCHANDISE DELIVERY DATE PROVIDED AT TIME OF BID. NO EXCEPTIONS.
 - THE SYSTEM MUST BE INSTALLED, PROGRAMMED AND TESTED IN ACCORDANCE WITH MANUFACTURER'S INSTRUCTIONS.
 - ALL NECESSARY CONNECTORS, CABLE AND WIRE MUST BE FURNISHED AND INSTALLED BY CCTV VENDOR TO PROVIDE A COMPLETE AND RELIABLE SYSTEM.
 - INSTALL DEVICES IN POSITIONS ACCORDING TO FURNISHED MC SPORTS DRAWINGS.
 - ANY DISCREPANCIES SHALL BE DIRECTED TO MC SPORTS CONSTRUCTION DEPARTMENT. FIELD REVISIONS WITHOUT APPROVAL OF MC SPORTS CONSTRUCTION WILL NOT BE APPROVED.
 - ALL CABLE AND WIRE SHALL BE INSTALLED PARALLEL AND SQUARE WITH BUILDING STRUCTURAL STEEL. CABLING WITHIN THE MANAGERS OFFICE MUST BE ORDERLY AND NEAT (CABLE TIES, ETC).
 - CAMERA AND DRONE LOCATIONS - PULL ALL CABLE WITHIN CONDUIT FROM ROOF JOISTS OR ABOVE FINISHED CEILING TILE TO CAMERA LOCATION. LOOP (5'-0") ADDITIONAL AT BUILDING STEEL AND TIE WITH CLEAR CABLE TIE.
 - PROVIDE AND INSTALL PUBLIC VIEW MONITORS WITH INTEGRATED WIDE DYNAMIC RANGE CAMERA AND TELESCOPING PENDANT AT ENTRYWAY LOCATIONS IN ACCORDANCE WITH MC SPORTS DRAWINGS.
 - PULL ALL CABLE FROM CAMERA LOCATIONS TO THE MANAGERS OFFICE. PULL CABLE FROM BUILDING STEEL ABOVE MANAGERS OFFICE DOWN 3" CONDUIT TO UPPER SHELF OVER THE SAFE LOCATION.
 - INSTALL HDDP DVR AND DESKTOP 32" MONITOR ON TOP SHELF IN MANAGERS OFFICE. SEE MC SPORTS DRAWINGS FOR LOCATION.
 - INSTALL POWER CONVERTER AND UPS ON WALL UNDER MANAGERS OFFICE DESK. A SAFE IS TO BE INSTALLED UNDER THE DOUBLE SHELF - TOP SHELF IS LOCATION OF HDDP AND MONITOR. DO NOT INSTALL CONVERTER OR UPS TO IMPEDE STORE SAFE OPERATION. PLUG UPS INTO 120V-20AMP DUPLEX RECEPTACLE ABOVE TOP CORNER SHELVING.



CCTV Plan
scale: 1/8" = 1'-0"

Revisions/Status	
X	
1	
2	
3	
4	
5	

MC SPORTS
3070 Shaffer St. Grand Rapids, MI 49512
(616) 942-2600 (616) 942-2312 Fax
www.mcsports.com

Total Space: 22,954 sq ft
Sales: 18,658 sq ft - 82%
Stock: 4,296 sq ft - 19%

MC Sports
Proposed:
Mount Vernon, OH

Drawn By: JAM
Date: 05-23-2018

CCTV PLAN
MC 2.20

Revisions/Status	
R1	X
R2	
R3	
R4	
R5	

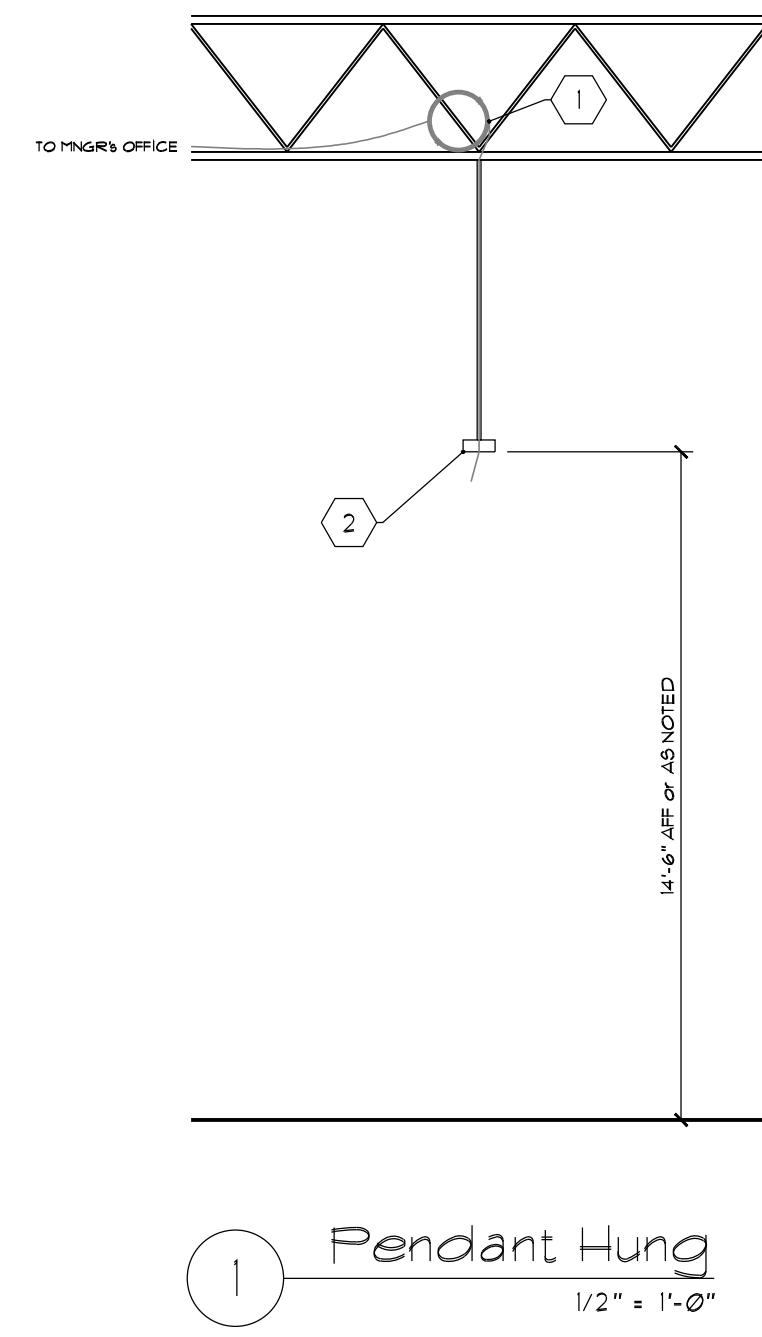
MC SPORTS
 3070 Spafford SE, Grand Rapids, MI 49512
 (616) 942-2800 (616) 942-2312 Fax
 www.mcsparts.com

Total Space: 22,954 sq ft
 Sales: 19,658 sq ft - 82%
 Stock: 600 sq ft - 2.6%
 4,296 sq ft - 19%

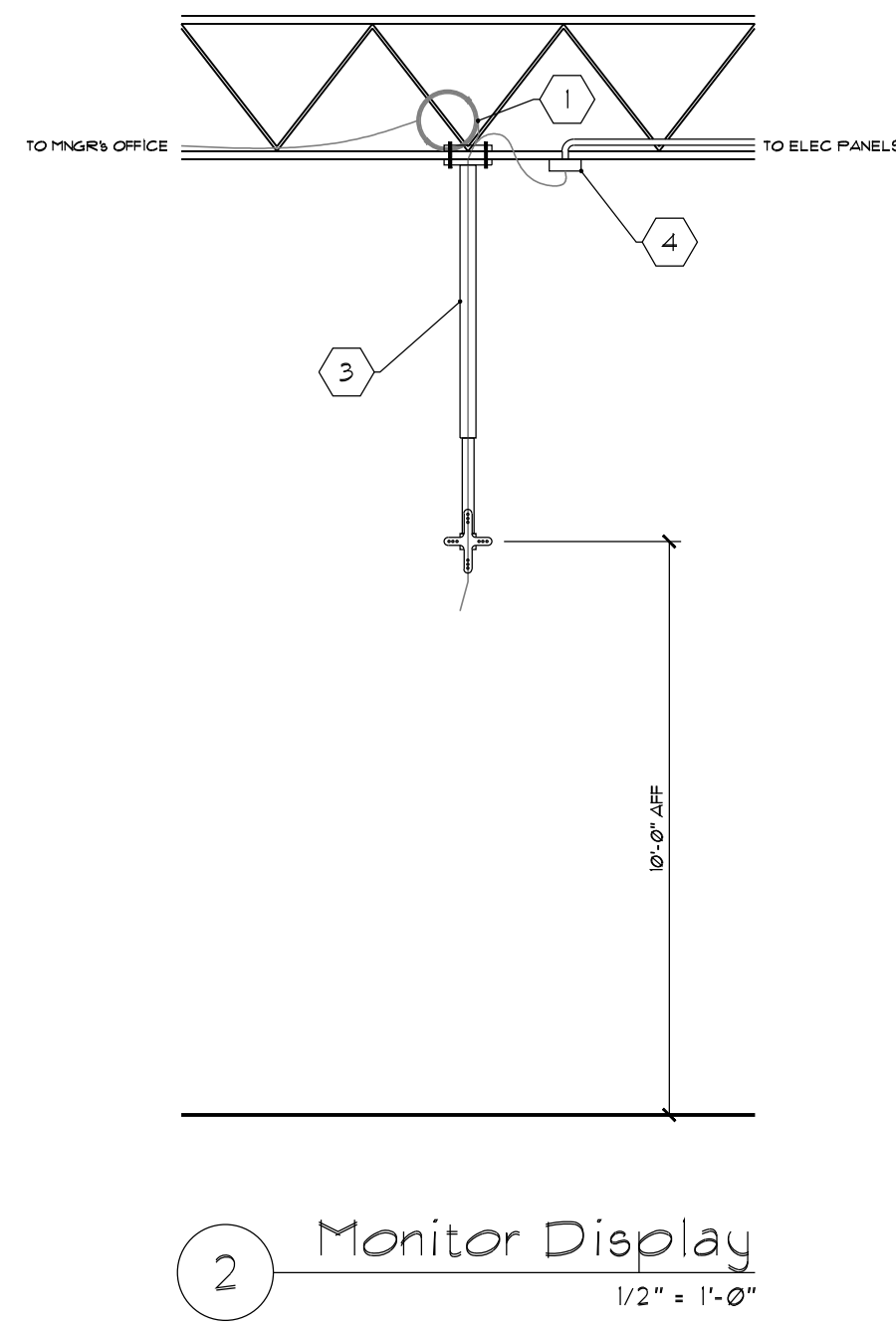
MC Sports
 Proposed:
 Mount Vernon, OH

Drawn By: JAM
 Date: 02-23-2018

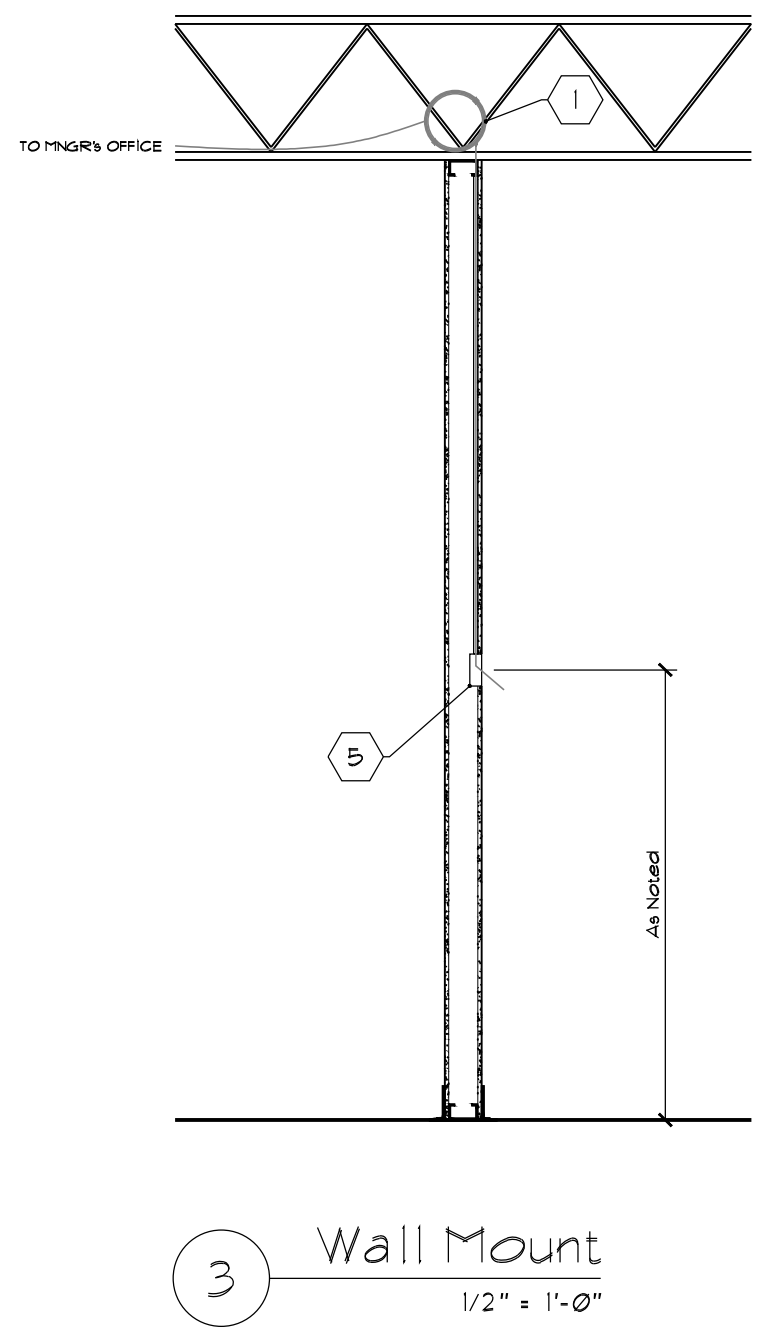
**BURGLAR
 & CCTV
 DETAILS**
**MC
 2.21**



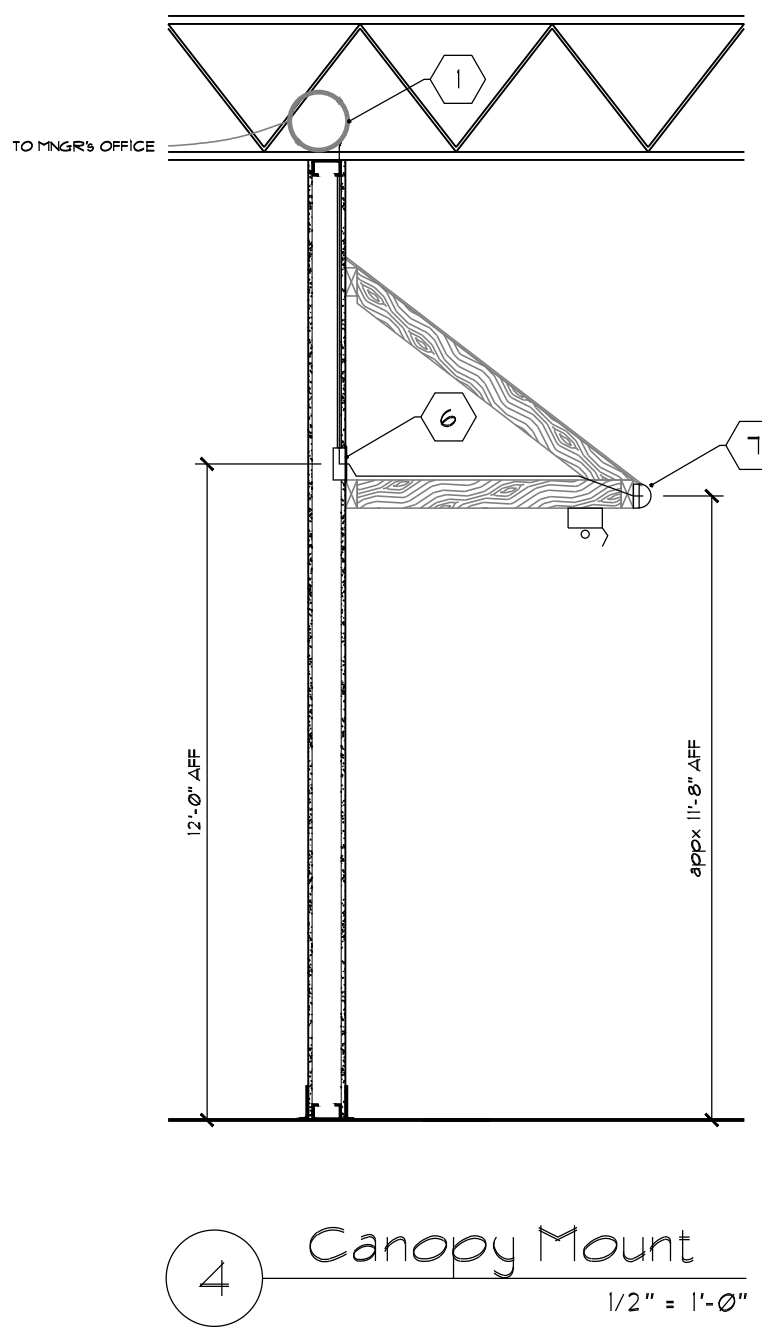
1 Pendant Hung
 1/2" x 1'-0"



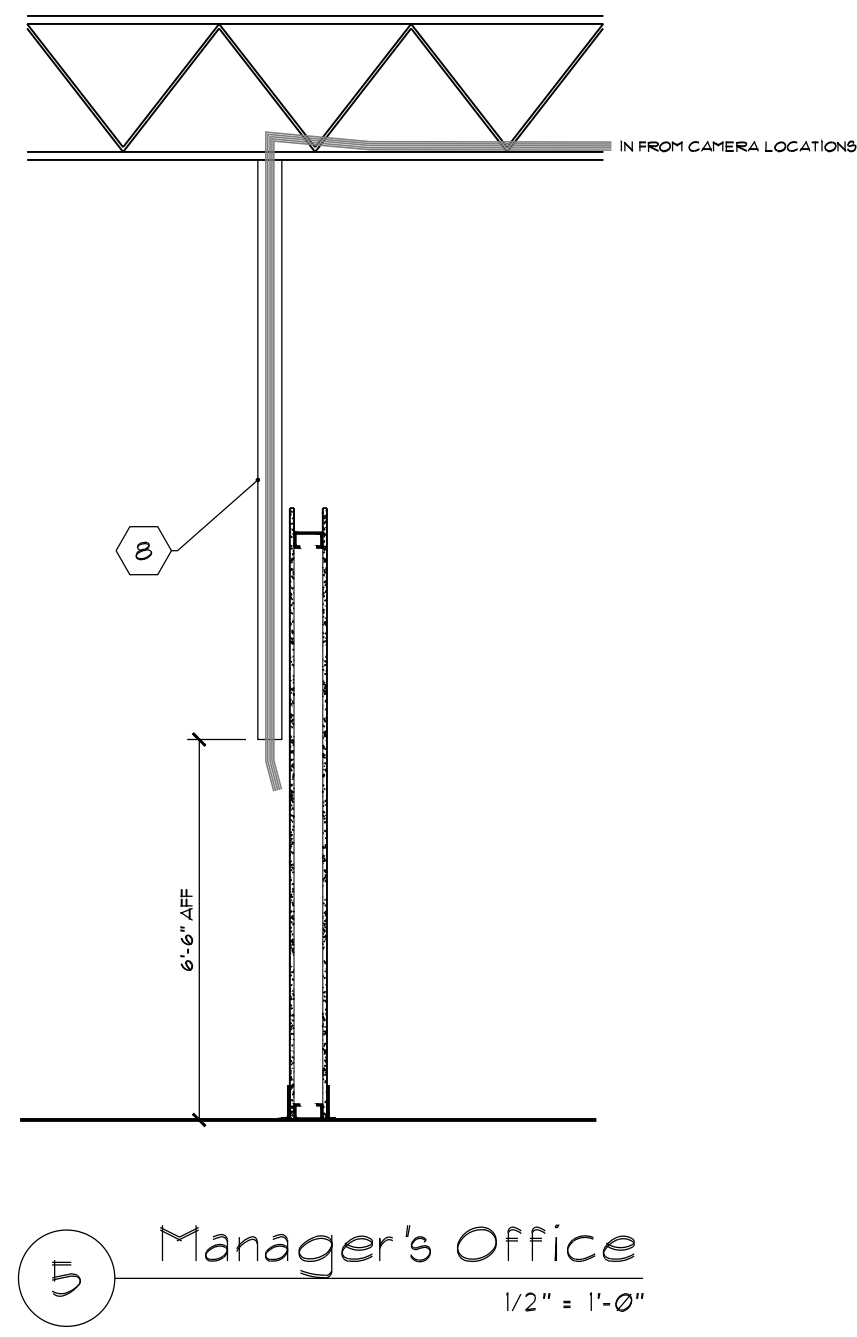
2 Monitor Display
 1/2" x 1'-0"



3 Wall Mount
 1/2" x 1'-0"



4 Canopy Mount
 1/2" x 1'-0"



5 Manager's Office
 1/2" x 1'-0"

- KEYED NOTES:**
- CCTV VENDOR TO PROVIDE ALL BACK BOXES, CONNECTORS, CABLE, & WIRE. ALL WIRING SHALL BE RAN PARALLEL & SQUARE WITH THE BUILDING STEEL. ALL WIRES SHALL BE GATHERED AT THE BUILDING STEEL (JOIST) & TIED TO CREATE AN ORDERLY INSTALLATION. PROVIDE MIN 20' EXTRA WIRE COILED AT BUILDING STEEL FOR FUTURE RELOCATION OF EQUIPMENT. WIRING TO RUN FROM EACH POINT OF CAMERA LOCATION TO TERMINATION IN MGR'S OFFICE. ALL WIRING TO BE BNC SHIMOSE CABLE; REGULAR COLOR - WHITE, INTEGRATED VIDEO/POWER.
 - E.C. TO FURNISH/INSTALL METAL DUAL GANG UTILITY BOX @ 15' AFF & 1/2" RIGID CONDUIT TO DECK w/ FULL CORD WITHIN. TO BE SUSPENDED VIA UNISTRUT w/ BEAM CLAMP MOUNTS AT ROOF JOIST. G.C. TO PAINT BOX, CONDUIT, & CLAMP TO MATCH: "P1". CCTV VENDOR TO PROVIDE REQUIRED WIRING & EQUIPMENT.
 - CCTV VENDOR TO PROVIDE MONITOR MOUNT, TELESCOPING POLE, & ANY REQUIRED WIRING & EQUIPMENT SUCH AS "PELCO" "FMCL-CMP". CCTV VENDOR TO ENSURE MONITOR MOUNT, TELESCOPING POLE, & ANY OTHER REQUIRED EQUIPMENT TO BE PAINTED FLAT BLACK. TO BE SUSPENDED @ 10' AFF.
 - E.C. TO PROVIDE DUPLEX @ ROOF JOIST FOR POWER OF THE MONITOR DISPLAY. G.C. TO PAINT CONDUIT, BOX, etc TO MATCH: "P2".
 - E.C. TO PROVIDE SINGLE GANG UTILITY BOX WITHIN WALL & BUSHED CONDUIT FROM BOX TO ROOF DECK. PROVIDE w/ FULL CORD READY.
 - E.C. TO PROVIDE SINGLE GANG UTILITY BOX WITHIN WALL & BUSHED CONDUIT FROM BOX TO ROOF DECK. PROVIDE w/ FULL CORD READY & COAX CABLE "IVORY" FACEPLATE.
 - CAMERA TO BE MOUNTED TO FRONT FACE OF CANOPY. WIRING TO BE RAN & TIED TO CREATE AN ORDERLY INSTALLATION.
 - E.C. TO RUN (1) 3/4" BUSHED PVC CONDUIT FOR CCTV FROM UNDERSIDE OF ROOF DECK TO INSIDE WALL OF MGR'S OFFICE. TO BE SURFACE MOUNTED ON WALL. G.C. TO PAINT PVC TO MATCH: "P1".

©2018 MC Sports, Grand Rapids, MI. All Rights Reserved. Mount Vernon, OH. This document is the property of MC Sports and is not to be distributed without the written consent of MC Sports.

