

# PRIME LOCATION AVAILABLE FOR LEASE

900 UNION BLVD. ENGLEWOOD, OH 45322



**Contact us for more information;**

LISA WIENER (440) 223-3382 ljwiener@gmail.com

STEVE EISENBERG (216) 831-6773 seisenberg@aol.com

**ARNOLD J. EISENBERG, INC.**  
Retail Leasing Specialist





# PROPERTY SPECIFICATIONS

<b>BUILDING SIZE</b>	10,004 SF building
<b>LAND AREA</b>	1.36 acres
<b>PROPERTY ADDRESS</b>	900 Union Blvd. Englewood, Ohio 45322
<b>YEAR BUILT</b>	1995/2019
<b>PARKING SPACES</b>	46 Spaces
<b>ZONING</b>	C-Commercial

# HIGHLIGHTS

Situated at a signalized hard corner with over 21,000 vehicles passing daily. The property is directly across from a Kroger-anchored center. The average household income is \$79,051, and the population within a three-mile radius is 34,430.

# AERIAL VIEW



Contact us for more information;

**LISA WIENER**  
440.223.3382  
ljwiener@gmail.com

**STEVE EISENBERG**  
216.831.6773  
seisenberg@aol.com



**ARNOLD J. EISENBERG, INC.**  
Retail Leasing Specialist





# RETAILER MAP

900 Union Blvd, Englewood, OH 45322



DEMOGRAPHICS	3 MILES	5 MILES	7 MILES
POPULATION	39,358	82,159	143,262
AVERAGE HH INCOME	\$64,181	\$67,904	\$70,756
MEDIAN HH INCOME	\$53,377	\$54,856	\$57,507
ESTIMATED HOUSEHOLDS	13,975	31,010	55,948
DAYTIME POPULATION	5,581	17,923	36,640

LISA WIENER (440) 223-3382 ljwiener@gmail.com

STEVE EISENBERG (216) 831-6773 seisenberg@aol.com

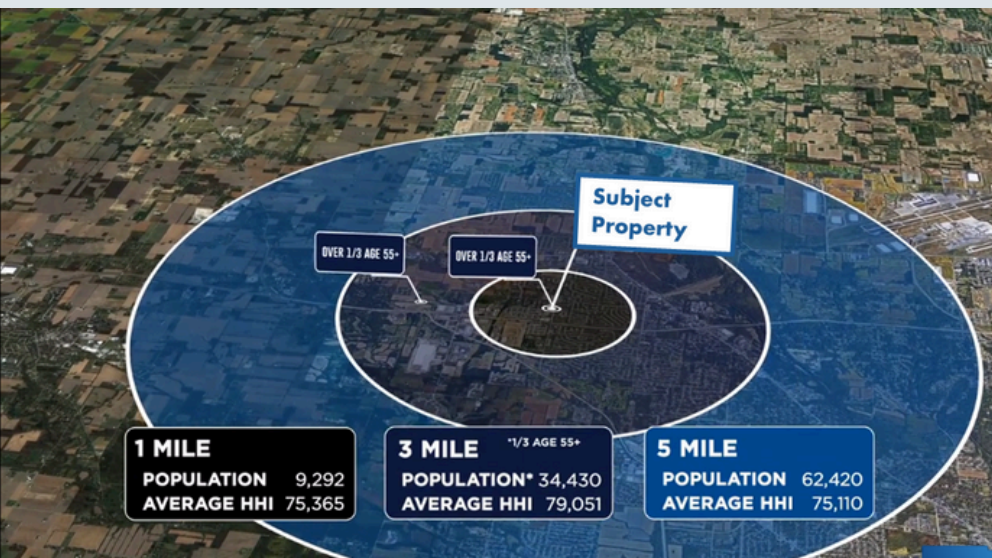
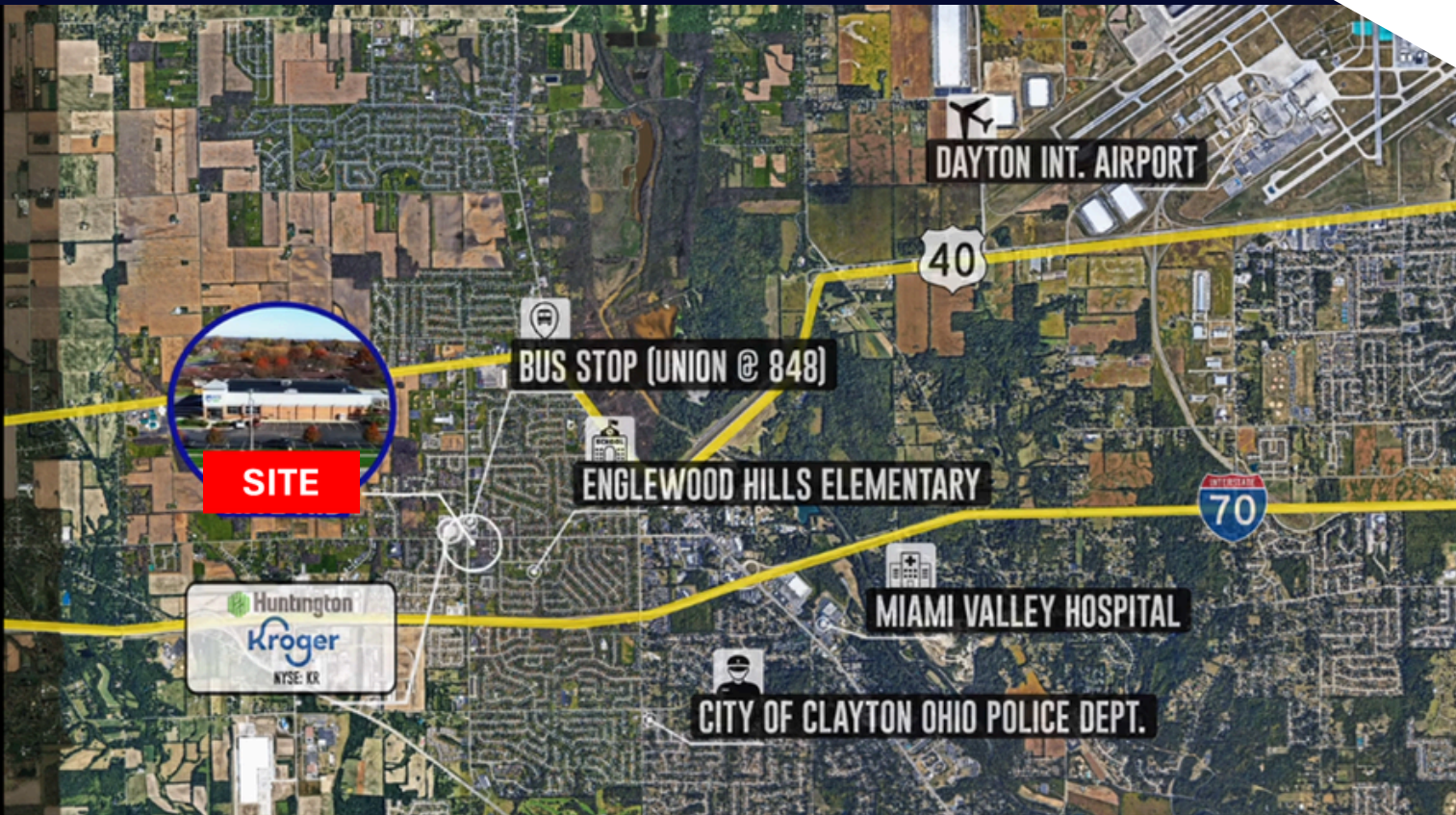
ARNOLD J. EISENBERG, INC.  
Retail Leasing Specialist





# LOCATION MAP

900 Union Blvd. Englewood, OH 45322



## CONTACT

**LISA WIENER**

440.223.3382

ljwiener@gmail.com

**STEVE EISENBERG**

216.831.6773

seisenberg@aol.com

**ARNOLD J. EISENBERG, INC.**  
Retail Leasing Specialist

